

# KAFS COURSES 2009

---

*The listing of archaeological courses for 2009.*

*Two-day courses cost £70, and KAFS members enjoy a discount on full prices, except on field trips. To book, fill in the form on page 33.*

*For further details of all courses and membership see: [www.kafs.co.uk](http://www.kafs.co.uk)*

## **March 7th & 8th, Field Walking and Map Analysis**

Walking across the landscape and recording features seen on the ground, is fundamental to most archaeology. This weekend course explains how to set out a field walking programme in the field and recognise and record artefacts found within the plough soil. These objects include flint tools, building material, pottery, glass and metal artefacts. One of the uses of field walking is to build up a database for large-scale regional archaeological surveys. We will consider the importance of regressive map analysis as part of this procedure. The course will cover: strategies and procedures, standard and non-standard linewalking, grid walking, pottery distribution, identifying pottery and building ceramics, and practical experience of field walking an important site. Cost for the weekend is £40 for non-members and KAFS member's free.



**Easter, April 10th to April 17th, Excavation of Roman buildings at Blacklands, Faversham.** Our third season of field work and excavation (above) at Blacklands. In 2008 a theatre complex was revealed and for this year an investigation into two associated temple enclosures and further work on the orchestra or 'cockpit' of the theatre. KAFS member's special fee £20 per day with 'Friends' free, non-members £30 per day.

## **April 18th & 19th, Bones and Burials**

Osteo-archaeology is the study of human remains. The course will be led by Dr Patrick Mahony from the Dept of Anthropology, University of Kent. The course will cover the on-site recording of human remains and how they can reveal information about the person's age, sex and state of health. Excavated skeletons will be available for study and analysis in practical sessions. Cost for the weekend is £70 for non-members and KAFS member's special fee of £60.



## **May 2nd to May 4th, Introduction to Archaeology**

A practical three-day bank holiday course on the newly discovered important Roman settlement at Blacklands near Faversham. We will survey the extent of the settlement, its access roads, field systems, and sample, through excavation and field-walking the extent and quality of survival of the Roman infrastructure. This course is ideal for newcomers to archaeology who wish to understand the archaeological process. We shall look at how archaeological sites are discovered and find out how different types of finds, such as pottery, bones and flints, reveal the lives of former peoples. The three-day Bank Holiday course costs £50 if membership is taken out at the time of booking the course.

# SUMMER EXCAVATIONS 2009

EASTER, ROMAN BUILDINGS AT BLACKLANDS, APRIL 10TH TO APRIL 17TH

ROMAN PALACE AT OPLONTIS, POMPEII, MAY 24TH TO JUNE 19TH

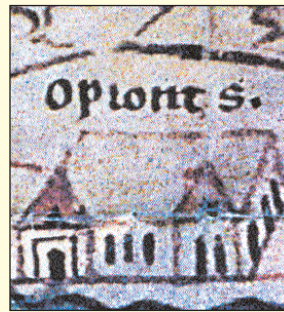
ROMAN BATHS AT BAX FARM, TEYNHAM, AUGUST 31ST TO SEPTEMBER 18TH



Easter, April 10th to April 17th,  
Excavation of Roman buildings at  
Blacklands, Faversham.

Our third season of field work and excavation at Blacklands. In 2008 a theatre complex was revealed and for this year an investigation into two associated temple enclosures and further work on the orchestra or 'cockpit' of the theatre. KAFS member's special fee £20 per day with 'Friends' free, non-members £30 per day.

May 24th to June 19th, Excavation of the Roman Palace at Oplontis, Pompeii  
In 2008 KAFS were invited by the University of Texas to participate in an archaeological investigation of a magnificent Roman maritime palace probably owned by the family of the Emperor Nero at Oplontis which is close to Pompeii. The Palace (above right) shown on a contemporary map was buried below six metres of pumice and ash in AD79.



For 2009 we are able to take a larger team of experienced KAFS archaeologists to work on this World Heritage Site. KAFS member's special fee of £35 per day. Spaces are limited.

August 31st to September 18th, Excavation at the Roman Baths at Bax Farm, Teynham, Kent  
Our first evaluation trench in 2007 exposed a cornucopia of archaeological features which included the concrete base of a large corn mill, a sunken road or 'hollow-way', Anglo-Saxon buildings and the remains of a massive stone-built Roman bath house. The masonry structure, c.10m across, enclosed a central octagonal *frigidarium* pool over 5m across.

Work in 2009 will focus on uncovering the full extent of this unique bath house and associated villa buildings. KAFS member's special fee £20 per day with 'Friends' free, non-members £30 per day.



The wall paintings (left) at Oplontis are some of the finest from the Roman world

whilst at Bax Farm (above) a unique octagonal bath house awaits further investigation.

# KAFS COURSES 2009

May 16th & 17th, The Practical Study of Stone Tools Terry Hardaker will give a worldwide



overview of the Palaeolithic period introducing the evolutionary framework and describing the central importance of stone tools. We trace the use of stone tools in Britain from newly

discovered sites in East Anglia, and study Britain's most important Palaeolithic site at Boxgrove followed by a practical session of tool recognition. Mesolithic and Neolithic artefacts will be studied as a prelude to an afternoon of fieldwalking when we will find examples of stone tools in the field. On Sunday there will be a practical exercise on field walking for lithic artefacts and flint knapping with John Lord, one of the country's leading practitioners, everyone will have the chance to make a flint tool with John's expert guidance. Cost for the weekend is £70 for non-members and KAFS member's special fee of £60.

## TRAINING DIG

SEPTEMBER 7TH TO 11TH

Monday 7th to Friday 11th September, Archaeological Training Week at Bax Farm. Beginners are welcome on the Monday to Friday training course, with the option to continue for further days (same daily fee applies) excavating a unique octagonal Roman bath house at Bax Farm. Topics taught each day are: Monday: History of the Site & Why dig? Tuesday: Excavation Techniques; Wednesday: Site Survey; Thursday: Archaeological Recording; Friday: Small Finds Recording. KAFS new member's special fee £20 per day, non-members £30 per day.



May 24th to June 19th, Excavation of the Roman Palace at Oplontis, Pompeii

A small team from SWAT Archaeology and selected members of KAFS will be working with the University of Texas on a Research Excavation at the world famous palace of Nero's wife Poppaea. The palace was overwhelmed by pumice and ash during the eruption of Vesuvius in AD79 and buried under six metres of volcanic debris. The World Heritage site was excavated in the 1960's with stunning results exposing some of the finest Roman paintings found anywhere in the Roman world. This is a unique opportunity to join that small select band of archaeologists to have excavated at Oplontis/Pompeii. Cost per day is £175 per week, accommodation and meals not included, but advice given on accommodation available at Pompeii. For further details email Dr Paul Wilkinson at info@kafs.co.uk



July 11th & 12th, Landscape Archaeology

A course in two parts and spread over two weekends. The course is designed for all those who want to know more about the English landscape. The first weekend will be devoted to the six main categories of information: field archaeology, aerial photography, maps, local history and place-names. Dr Paul Wilkinson will guide us through the countryside in the afternoon to show how to apply archaeological theory to interpret and understand the landscape of England. We can trace the history of the landscape by

# FIELD TRIPS 2009

THE SAXON SHORE FORTS, KENT & SUSSEX, AUGUST 7TH TO AUGUST 9TH

DIOCLETIAN'S PALACE AT SPLIT, SEPT 19TH TO SEPT 21ST

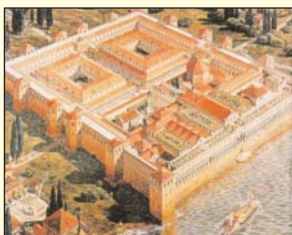
ROMAN & CLASSICAL GREECE, OCTOBER 10TH TO 17TH (TBA)

ROMAN GERMANY, DECEMBER 5TH TO 11TH

*Field Trips led by Paul Wilkinson and other experts have over the last eight years been a huge success with many hundreds of clients enjoying archaeological sites in Turkey, Sicily, Morocco, Tunisia, Spain, south of France, Rome, Pompeii and the Bay of Naples, Croatia, Hadrian's Wall and Germany. The trips fall into two categories- our sister company 'Roman Holidays' in association with Thomson Holidays offer an all-inclusive holiday with excellent hotels, flights and all meals whilst KAFS offer a 'no frills' study tour where advice is given on flights and hotels with KAFS providing the same standard of care as Roman Holidays when we meet up on the ground. Both types of holidays offer excellent value and provide more for less cost than many of the better known archaeological tour companies. Our excellence can be judged by the number of clients returning to us year after year for yet more wonderful trips.*

## August 7th, 8th, 9th, The Saxon Shore Forts in Kent, and Sussex

The Saxon Shore forts present a number of archaeological and historical problems. This is largely because they appear as a unified system in the late Roman document, the *Notitia Dignitatum*, but archaeology and structural analysis have shown that they were not built at the same time. We will visit by coach Reculver, Richborough, Dover, Lympne, Pevensey, and Portchester with a leading expert on Roman Saxon Shore forts. Based at Canterbury the cost for the three days is £99 which only includes coach and all entrance fees.



Sept 19th, 20th, 21st, Diocletian's Palace at Split, The palace of the Emperor Diocletian at Split in Croatia

is today the heart of the inner city of Split. Join archaeologist, Dr Paul Wilkinson, on a long weekend trip that brings the glory of this Imperial residence to life. This 'no frills' holiday costs £150, does not include flights or hotel but does include all

entrance fees, a local guide and ferry to the off-shore islands and coach or bus to the nearby Roman town of Salona and Trogir. For further information on hotels and flights email Paul Wilkinson at info@kafs.co.uk

## Roman & Classical Greece, October 10th to 17th (TBA)

The ultimate trip! We will visit Athens and Corinth, one of the largest and best preserved Roman towns in the world, Delphi, Olympia, Sparta, Mistra, Mycenae, Epidaurus, and lots lots more. All inclusive Roman Holiday price is £1675 per person.



December 5th to 11th, Roman Germany Roman Germanica

formed the hard-won eastern frontier of the Empire. This is a two-centre trip to the heart of Roman Germanica. Our tour, guided by Dr Paul Wilkinson, begins in Cologne, Germany's oldest city, with its innumerable cultural and historical treasures, world-famous museums and active art scene. Our second centre is Trier, one of the most important cities in the Roman Empire. The all-inclusive price with Roman Holidays is from £998 per person.

# KAFS COURSES

---

studying the development of field and parish boundaries. During the course of the next weekend (July 18th & 19th) we will trace, section



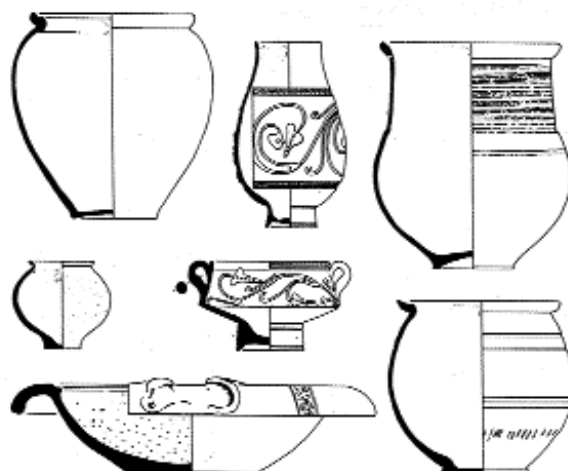
by excavation and record a new significant bank and ditch boundary (left) in the very best traditions of Time-Team. This is a recently identified enigmatic field and parish boundary at Radfield that runs for 22km and divides Kent in half. Cost for each weekend is £70 for non-members and KAFS member's special fee of £60.

**August 7th, 8th, 9th, The Saxon Shore Forts. The Roman forts in Kent, and Sussex**  
The Saxon Shore forts present a number of archaeological and historical problems. This is largely because they appear as a unified system in the late Roman document, the *Notitia Dignitatum*, but archaeology and structural analysis have shown that they were not built at the same time. We will visit by coach Reculver, Richborough, Dover, Lympne, Pevensey, and Portchester with a leading expert on Roman Saxon Shore forts. Based at Canterbury the cost for the three days is £99 which includes coach and all entrance fees but does not include accommodation or meals.

**August 31st to September 18th, Excavation at the Roman Baths at Bax Farm, Teynham, Kent**  
See page 29 for details.

**September 12th & 13th, An introduction to Anglo-Saxon pottery**  
The course, led by Paul Blinkhorn, will introduce students to the practical problems of identifying Anglo-Saxon pottery. The types of pottery from each period will be explained and will be available for examination. Cost for the weekend is £70 for non-members and £60 for KAFS.

**September 19th, 20th, 21st. Field Trip to Diocletian's Palace at Split, Croatia**  
The palace of the Emperor Diocletian at Split in Croatia is today the heart of the inner city of Split. Join archaeologist, Dr Paul Wilkinson, on a long weekend trip that brings the glory of this Imperial residence to life. This 'no frills' holiday costs £150, does not include flights or hotel but does include all entrance fees, a local guide and ferry to the offshore islands and coach or bus to the nearby Roman town of Salona and Trogir. For further information on hotels and flights email Paul Wilkinson at [info@kafs.co.uk](mailto:info@kafs.co.uk)



**October 3rd & 4th An introduction to Roman pottery**  
The course, led by Malcolm Lyne and members of the *Study Group for Roman Pottery*, will introduce students to the practical problems of identifying Roman pottery. The types of pottery from each period will be explained and will be available for examination. Cost for the weekend is £70 for non-members and £60 for KAFS members.

**October 8th & 9th, Archaeological Drawing**  
A beginner's and refresher course introducing participants to drawing archaeological artefacts. There will be practical sessions each day demonstrating how to illustrate pottery, bone, metal and other artefacts found on archaeological sites. Course led by Jane Russell, who was senior illustrator of the UCL Field Archaeology Unit.

**December 5th to 11th, Roman Germany**  
See page 31 for details.

# BOOKING FORM

March 7th & 8th, Field Walking and Map Analysis	KAFS member's free. £40 for non-members
Easter, April 10th to April 17th, Excavation of Roman buildings at Blacklands	KAFS member's £20 per day with 'Friends' free, non-members £30 per day.
April 18th & 19th, Bones and Burials	KAFS member's £60. £70 for non-members
May 2nd to May 4th, Introduction to Archaeology	KAFS member's £50 if taken out on booking
May 16th & 17th, The Practical Study of Stone Tools	KAFS member's £60. £70 for non-members
May 24th to June 19th, Excavation of the Roman Palace at Oplontis, Pompeii	£175 per week
July 11th & 12th, Landscape Archaeology	KAFS member's £60. £70 for non-members
July 18th & 19th, Landscape Archaeology	KAFS member's £60. £70 for non-members
August 7th, 8th, 9th, The Saxon Shore Forts. The Roman forts in Kent, and Sussex	£99 per person
August 31st to September 18th, Excavation at the Roman Baths at Bax Farm	KAFS member's £20 per day with 'Friends' free, non-members £30 per day.
Monday September 7th to Friday 11th , Archaeological Training Week at Bax Farm.	KAFS new member's special fee £20 per day, non-members £30 per day.
September 12th & 13th, An introduction to Anglo-Saxon pottery	KAFS member's £60. £70 for non-members
September 19th, 20th, 21st, Field Trip to Diocletians Palace at Split, Croatia	£150 per person
October 3rd & 4th, An introduction to Roman pottery	KAFS member's £60. £70 for non-members
October 8th & 9th, Archaeological Drawing	KAFS member's £60. £70 for non-members
October 10th to 17th, Roman & Classical Greece (TBA)	£1675 per person
December 5th to 11th, Roman Germany	£998 per person

Name and Date of Courses (highlight above).....

Your Name.....

Address.....

.....

.....Postcode.....Tel No.....E-mail.....

I enclose a cheque (payable to KAFS)  
for.....

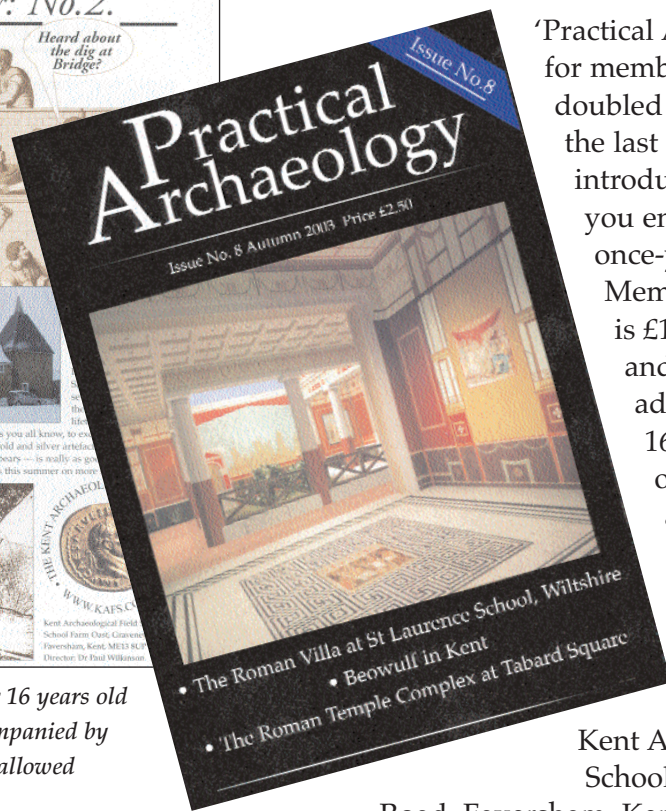
Please return this form with full payment to:-

The Kent Archaeological Field School, School Farm Oast, Graveney Road, Faversham, Kent ME13 8UP. Tel: 01795 532548 Website: [www.kafs.co.uk](http://www.kafs.co.uk) E-mail: [info@kafs.co.uk](mailto:info@kafs.co.uk)

*Please note that courses are only bookable in advance and are non-refundable or transferable. Member's discount does not apply to special fees and field trips. Children under 16 years old are welcome on courses, but must be accompanied by an adult; under-16s are not allowed on excavations.*

# MEMBERSHIP FORM

# Practical Archaeology



'Practical Archaeology' is published for members of the KAFS. We have doubled the number of pages since the last copy and have just introduced colour. We hope that you enjoy the new look of the once-yearly magazine.

Membership for a single person is £15, for two adults it is £25, and family membership (two adults and two children under 16 years old\*) is £30. For overseas membership please add £5. Membership entitles you to a discount on courses at the KAFS, except for special fees and field trips. Please return the completed form to:

Kent Archaeological Field School,  
School Farm Oast, Graveney

Road, Faversham, Kent, ME13 8UP.

\*Please note that children under 16 years old are welcome on courses, if accompanied by an adult, but under-16s are not allowed on excavations.

**BANKERS ORDER (FOR MEMBERSHIP)**  
(Please return to us and NOT to your bank)

To..... (Name of your bank)  
.....  
.....  
.....(Your branch address)

Please pay to the Midland Bank, 281 Chiswick High Road, W4 (40-02-13) for the account of 'Practical Archaeology' (A/c No. 61241001) the sum of £..... on the date of receipt of this form and thereafter the same amount annually on the same date until further notice.

Your Name.....Type of membership.....  
Your Address.....  
.....Postcode.....  
Your Account number.....Your sort code.....Tel. no.....  
Signature.....Date.....